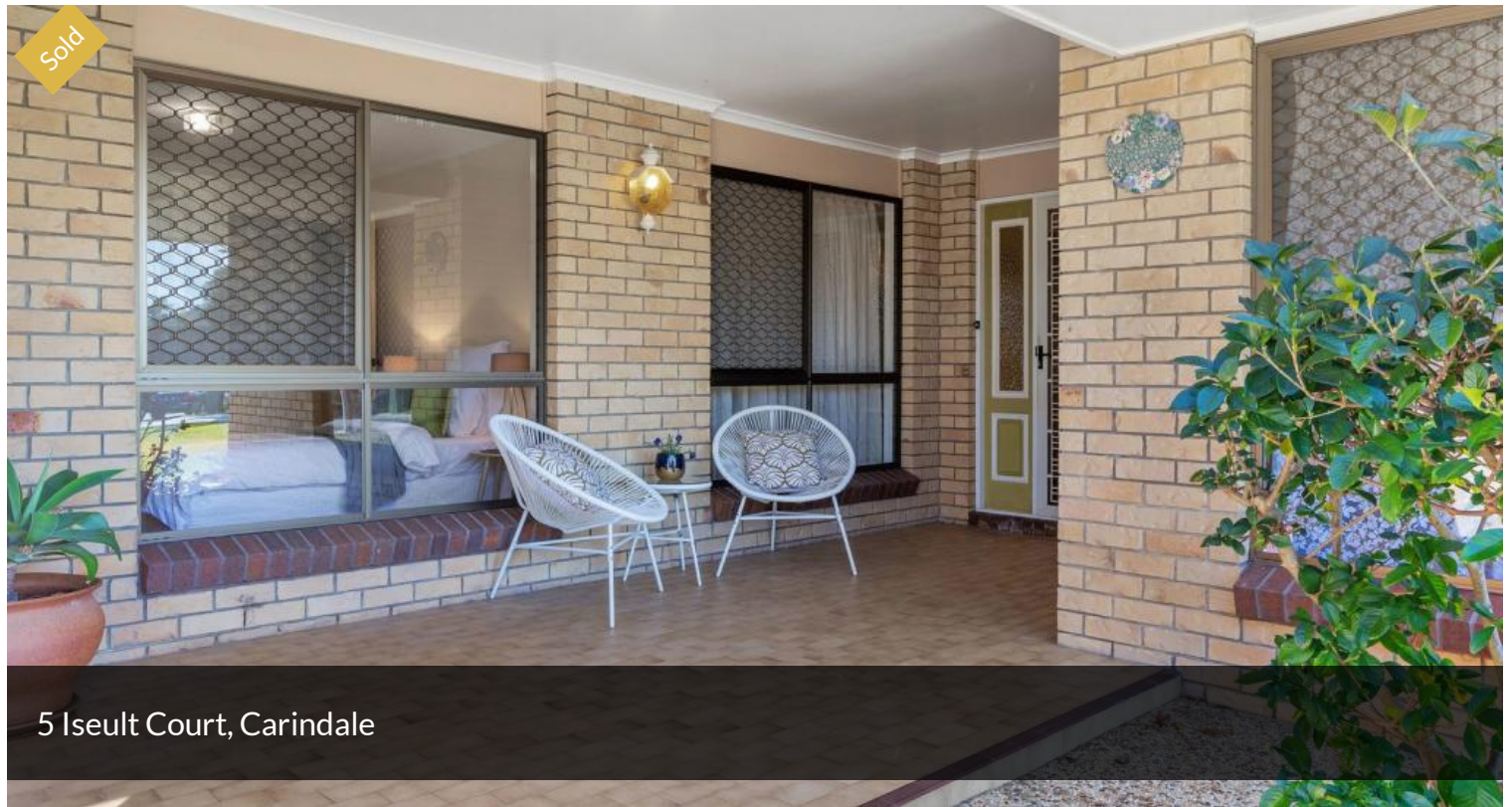


Sold



5 Iseult Court, Carindale



SOLD UNDER THE HAMMER!

Tucked away in a cul-de-sac on a huge 981m² block, you are not only buying a solid house but a friendly neighborhood that still boasts some old fashioned values.

Located in the highly-sorted suburb of Carindale (4152), the property at 5 Iseult Court will be sold at the Auction on the 5th September. Perfectly positioned in a convenient and quiet street, the Westfield Shopping Centre is only a 4 minute drive from the property. There are 4 spacious bedrooms, 2 bathrooms including an ensuite to the main bedroom. Double lock-up garage (one has remote access) with covered access to the house entrance.

Let us take a good look at what the property offers:

- Open plan Kitchen with oven, dishwasher, electric cooktop, rangehood, pantry cupboard and plenty of storage
- Fully air-conditioned, family room and ample space for entertainers (pool room)
- Separate and open plan formal lounge and dining area with cathedral ceilings

🛏 4 🚿 2 🚗 4 📏 981 m²

Price SOLD for \$785,000

Property Type Residential

Property ID 1185

Land Area 981 m²

AGENT DETAILS

Lucky Tennekoon - 0418271827

OFFICE DETAILS

iSale Property - Eight Mile Plains
2497 Logan Rd Eight Mile Plains,
QLD, 4113 Australia
(07) 3219 8500



- Extra spacious ensuite master bedroom with air-con and built-in-robe
 - Spacious 2 bedrooms with built-in robes and fourth bedroom to accommodate guests
 - Family bathroom with Shower, bathtub and vanity with separate toilet
 - Outside covered alfresco for get-togethers and family meals
 - Double lock-up garage (1 with remote access)
 - Spacious laundry
 - NBN connected
 - Solar system 2.5 years old with 12 panels (Good quality German SMA inverter)
 - Breezemaker cooling system to circulate the air in the house
 - House is fully insulated with ceiling Batts
 - Large water tank with pump, for watering the gardens
 - Electricity and water to the bird aviary/greenhouse at the back
 - Huge garden shed
 - Yearly pest and termite inspections and treatments were carried out during Ron and Jean's ownership
 - Close to Carindale and all services with the BCC bus service on Meadowlands Road and Tristan Street
 - Bulimba Creek walk and cycleway within 500m plus Meadowlands Parklands with Barbeque areas, exercise machines and kids play area.
- There is also a monthly market held in this area.

The above information provided has been furnished to us by the vendor/s. We have not verified whether or not that information is accurate and do not have any belief in one way or the other in its accuracy. We do not accept any responsibility to any person for its accuracy and do no more than pass it on. All interested parties should make and rely upon their own inquiries in order to determine whether or not this information is in fact accurate.